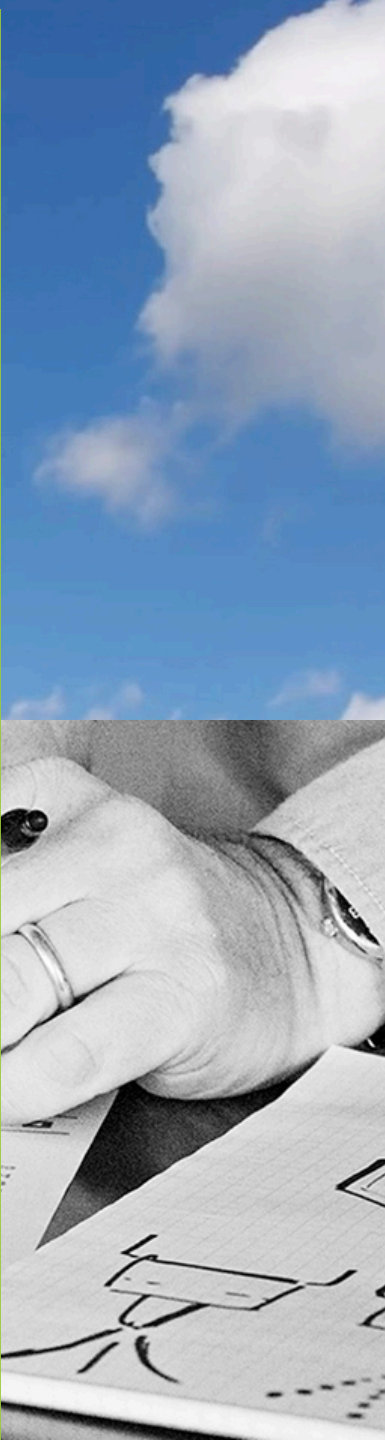
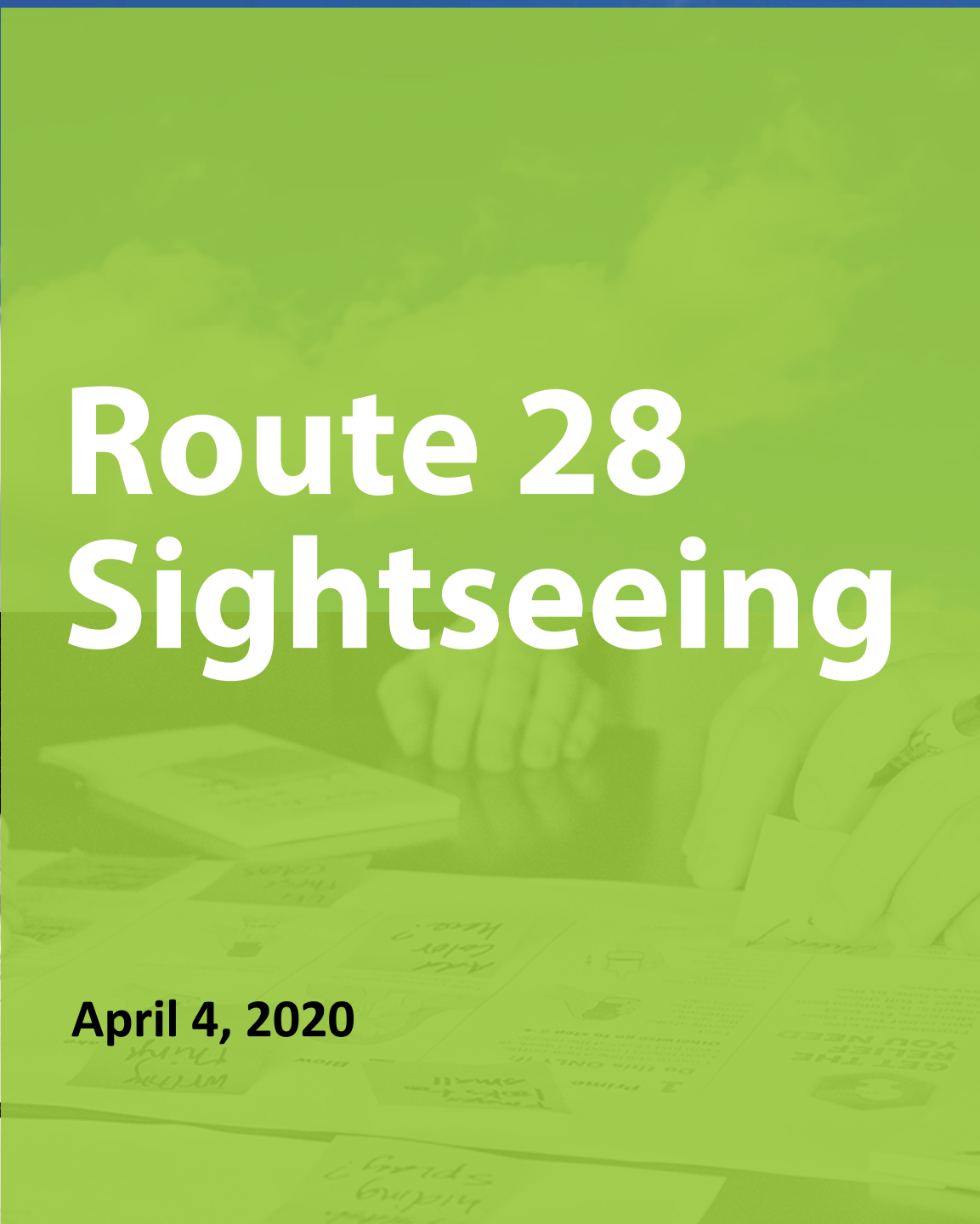
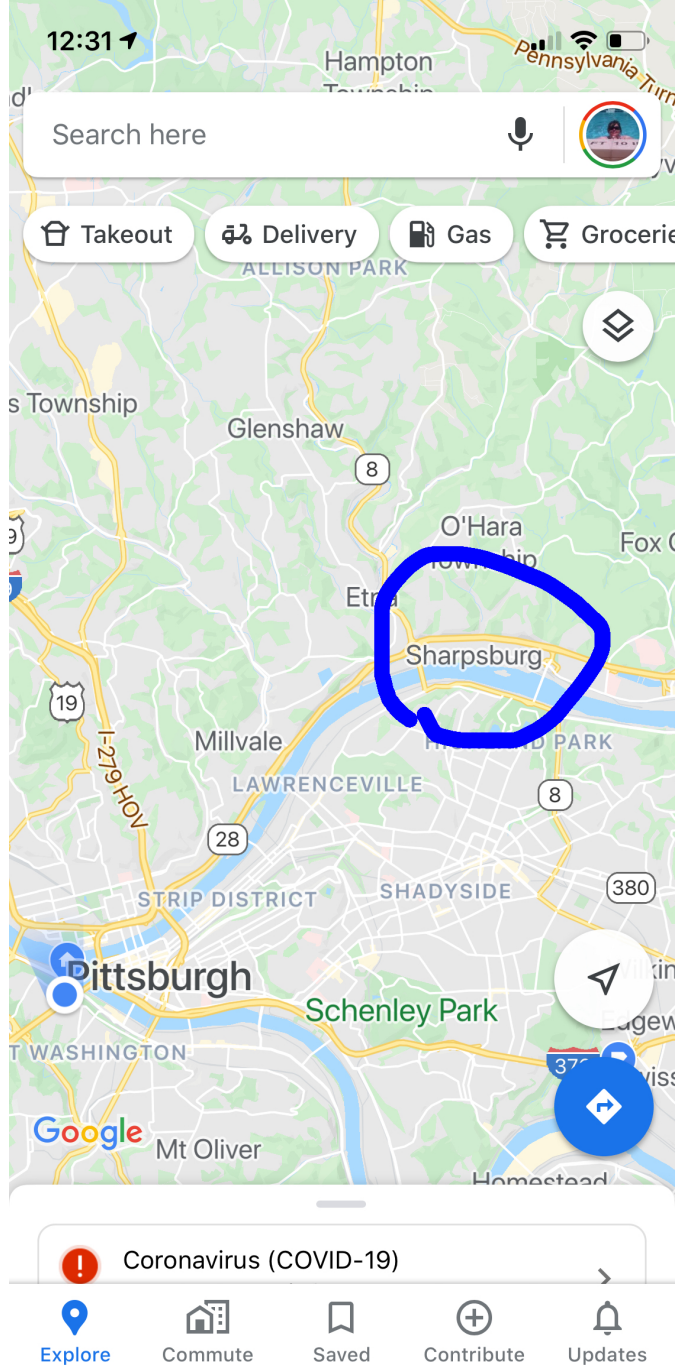


# Route 28 Sightseeing

April 4, 2020



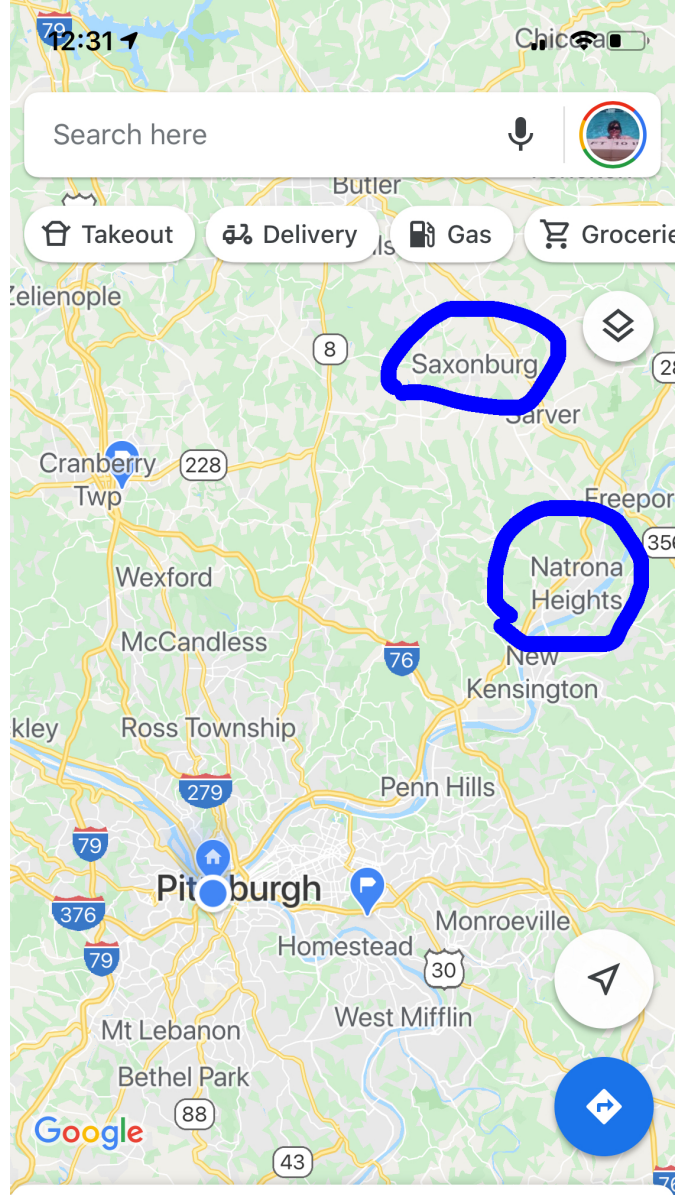


We followed Route 28 North,  
first to Sharpsburg...

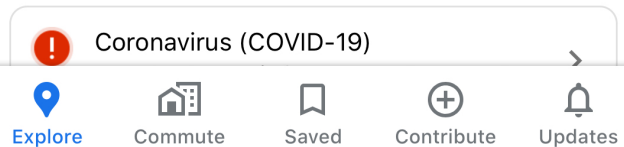




Then to Springdale to see the Rachel Carson Homestead...



Then to Saxonburg to see the museum dedicated to John Roebling, then to Natrona Heights.







We got onto Route  
28 by crossing  
through downtown...





Getting onto the Veterans Bridge and driving over the Allegheny River, the river that parallels Route 28.









BIRTHPLACE OF THE  
**H.J. Heinz Company**



101





← 8th St  
Ali St →



NO  
TURN  
ON  
RED







We were delighted to discover that Sharpsburg has a statue of Guyasuta and that he was wearing a mask.



Guyasuta, as I'm sure you know, was a Seneca leader who played an important role in 18<sup>th</sup> C diplomacy and warfare. Here he is with George Washington, whom he guided through Western Pa., in the Mt. Washington statue *Point of View*.





EXIT 12A

Pittsburgh  
Mills Blvd

1 MILE

EXIT ↓ ONLY

EXIT 12

Cheswick  
Springdale ↗

JACKET  
ROAD  
DETOUR ↗







When one thinks of pools and patios, one always thinks of elephants, right? (Also, note the Greek lettering on the building. It just all fits.)



1 Freeport Road  
P10 Alleg.Vally Flyer



**RACHEL  
CARSON  
HOMESTEAD**

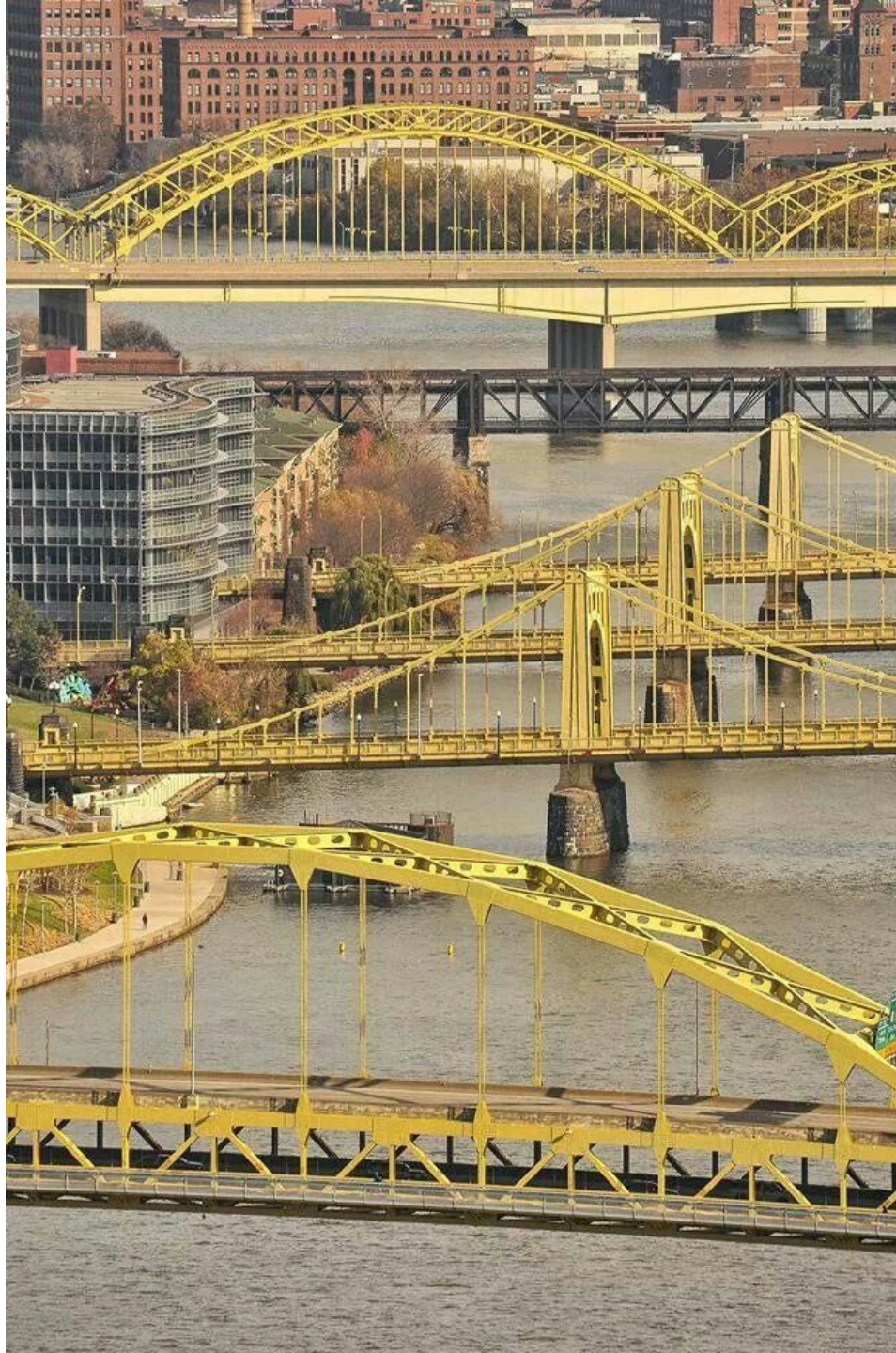






This is the childhood home of Rachel Carson, noted marine biologist, whose book *Silent Spring* ignited the global environmental movement.





The three middle bridges here—called Pittsburgh’s “Sisters Bridges”—are the only trio of nearly identical bridges in the U.S. They are named after Roberto Clemente (the closest of the three, on Sixth Street), Andy Warhol (Seventh Street) and Rachel Carson (Ninth Street).





If Pittsburgh had a Mount Rushmore, I would put Rachel Carson, Roberto Clemente, Andy Warhol, and Mister Rogers on it.





Other contenders might be Pulitzer Prize-winning historian David McCullough, Impressionist painter Mary Cassatt, Franco Harris, and GUYASUTA.





Then we drove a little north of Route 28 to see Saxonburg, the town founded by John Roebling and his brother, Carl. Roebling, you may know, was a civil engineer, who went on to build bridges, including two in Pittsburgh and the famed Brooklyn Bridge.





THE GREAT EAST RIVER SUSPENSION BRIDGE,  
CONNECTING THE CITIES OF NEW YORK AND BROOKLYN.

### THE GREAT EAST RIVER SUSPENSION BRIDGE, CONNECTING THE CITIES OF NEW YORK AND BROOKLYN.

The Bridge crosses the river by a single span of 2001 ft. suspended by steel cables. Height between the approach to the first pier connecting with the Central is 235 ft. approach at the further end 162 ft. total length 3682 ft. Height at Tower 128 ft. clear roadway to grade of 20 ft. this height to top of arch 365 ft. from roadway to top 500 ft. width of bridge at center 58 feet with 10 feet for sidewalks, roadway for sidewalks, and walks for pedestrians, and an elevated promenade overlooking a view of extraordinary beauty and extent. Estimated cost \$22,000,000.

THE GREAT EAST RIVER SUSPENSION BRIDGE,  
CONNECTING THE CITIES OF NEW YORK AND BROOKLYN.

The famed  
Brooklyn  
Bridge.





And the  
tiny replica  
at the  
Saxonburg  
Museum.  
Sooooo  
cute!





SAXONBURG MUSEUM

MUSEUM HOURS  
11:00 AM - 5:00 PM  
TUE - SUN

ADT

Handicapped parking symbol





Our next stop was Natrona Bottling, the last manufacturer in Allegheny County of soda bottled in glass bottles.





They make Red Ribbon Soda. I love Red Ribbon Cherry Soda. The factory was a dump, though. If they hired me, I'd turn it into a destination, with a brewery and a restaurant.





Also, every  
tree was in  
bloom  
everywhere  
we went.





Our final stop was the Just Good Donut Shop in the Southside. They were out of everything but these.

Our trip took a total of 2 ½ hours and we never got out of the car.